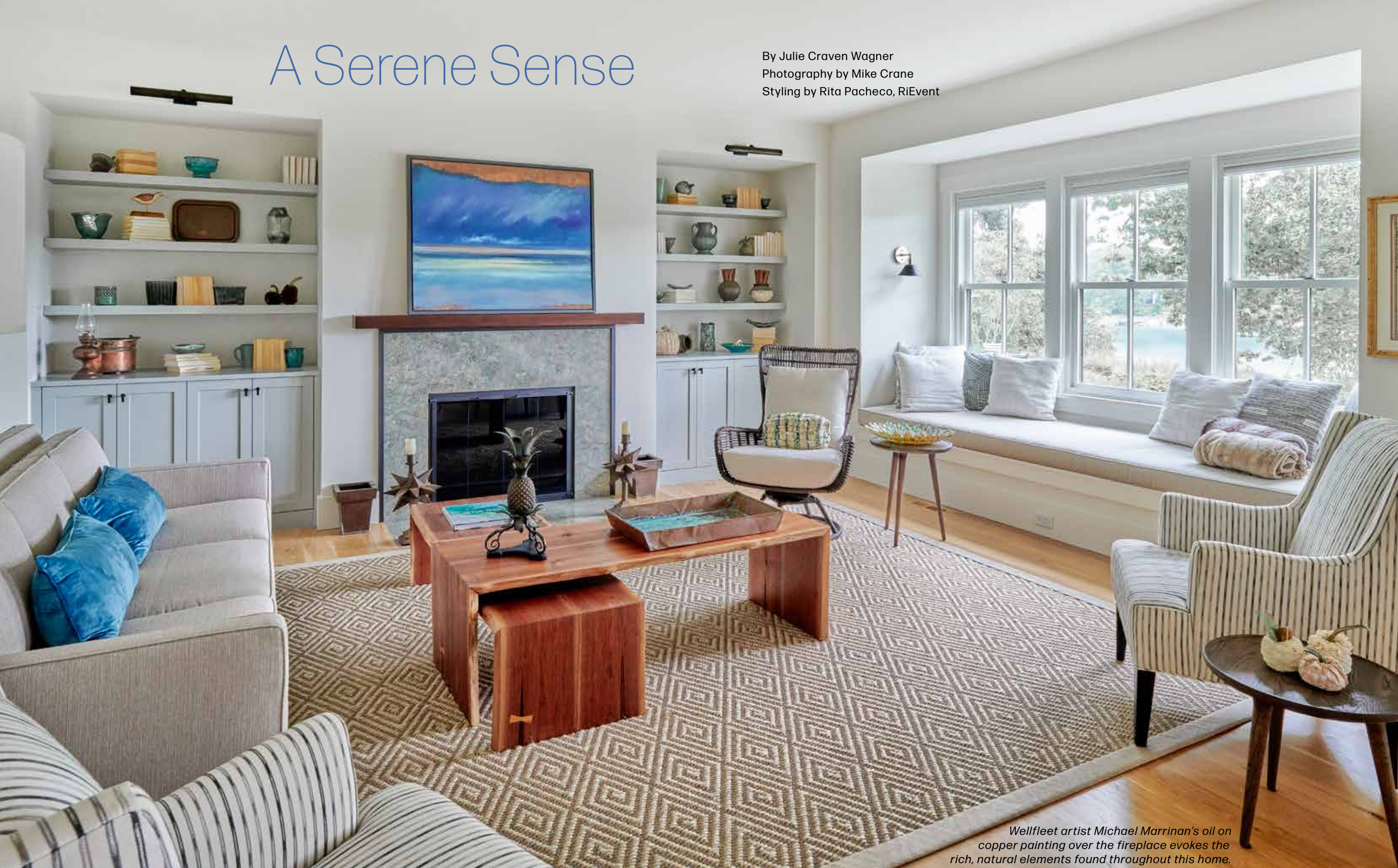


A Serene Sense

By Julie Craven Wagner
Photography by Mike Crane
Styling by Rita Pacheco, RiEvent



Wellfleet artist Michael Marrinan's oil on copper painting over the fireplace evokes the rich, natural elements found throughout this home.



Hutker Architects and LaBarge Homes join together to create a quiet and peaceful retreat on Osterville's Eel River.

There is nothing quite like the sense of anticipation a disappearing driveway and a well-conceived approach to a home elicits in those who are visiting for the first time, as well as the regular inhabitants whose never-ending satisfaction of the slow reveal endures. For a recently completed project in Osterville, that sense of intrigue is just the beginning of the waves of sensory input experienced while navigating the multitude of spaces and vistas inherent to the overall program. Jim Cappuccino, AIA partner at Hutker Architects, who along with his team Erin Levin and Ryan Alcadinho, says the homeowners, who have a history of summering in Osterville, knew what they wanted in their new home. "They wanted a modern take on a farmhouse feel and sensibility," Cappuccino explains. "However, it

was important to keep the height and scale proportionate to the lot, which had acreage, but was long and narrow. Of course, the incredible view of the Eel River setting is so serene, it was important to keep the relationship with that waterfront feature as a major component of the design throughout."

As already stated, that design proposition begins with the turn into the driveway. The landscape design was conceived by the energetic and intuitive Stephanie Hubbard, principal of Site Creative in Boston. Hubbard's passion for the natural world and how the spaces in which we live can contribute to our overall enjoyment, is evident in all of her work. An average landscape designer might have centered the start of the driveway in the exact middle of the front lot line along the street. Hubbard however, using her subtle powers of positive manipulation, placed the entrance at the top corner of the lot, so as to immediately introduce the first of several, subtle curves that serve to gradually unveil the residence beyond. "The previous home that was there was visible from the street, and the driveway was one straight line," Hubbard explains. "Now there is the ability to provide woodland interest, that also serves to buffer the home from the public way."

As the living spaces ultimately do come into view, one first notices a pool cabana with an open portico



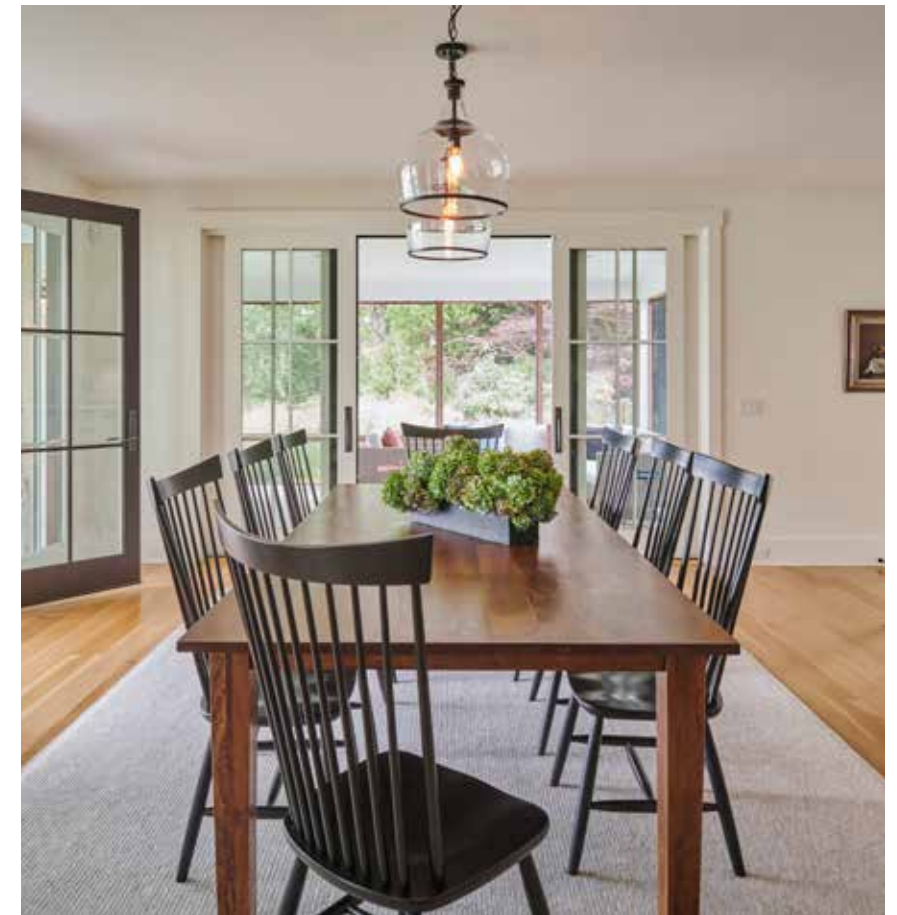
providing shade at the end of a long narrow pool. A spacious pea stone car court has a park-like feeling thanks to the choice of trees and shrubs Hubbard has included in her plan. The entire front façade of the home is buffered by what Hubbard refers to as a “curated meadow” which consists of native and sustainable varieties of grasses and flowering pollinators. Carefully placed fieldstone pavers lead the way to two welcoming entries.

“Each entrance accesses distinct wings of the home,” Cappuccino explains. “To the right, entry is received as a more traditional experience—a small entry way that gives way to an open kitchen, dining, living space; with the view to the water through the home that draws you in. And the entrance to the left is the more casual mudroom, with access to more personal spaces like the primary suite. Again the framing of the view comes into

focus at the end of the hall with the floor-to-ceiling window wall.” The view is used to create enticement, and moments to pause; a theme the design team employed throughout the home, providing subtly impactful connections between the interior and exterior spaces.

The quality of the design is evident at every turn, but without masterful execution it would have all been wasted. Todd LaBarge, principal of

LaBarge Homes in West Harwich was chosen by the homeowner to build the design Hutker’s team had imagined. “This was a very special project, and is defined throughout by the successful collaboration,” LaBarge shares. “Not only was it great working with creative people like Jim and his team, and Stephanie, but the homeowners’ clear and confident vision of what they wanted to achieve was an exciting challenge to fulfill. I think everyone brought their ‘A game’ and as a result it just made for a better outcome overall.” Impeccably crafted white shiplap paneling wraps the walls throughout the home and quarter-sawn oak flooring resonates with quiet, yet powerful echoes under the bare feet of summer. LaBarge and his team crafted built-ins throughout including a nook built into the center stairwell, on either side of the fireplace, and in a cozy office hidden by a sliding barn door. Marvin windows and doors with dark cladding frame the expansive pastoral



AUTHENTIC · ORIGINAL · HYGGE

Serving Boston to Cape Cod and the Islands

cathykertinteriors.com | 508-743-7711 | Cathy Kert interiors



BEACON GARDENS
AT OSTERVILLE

TREES • SHRUBS • PERENNIALS • ANNUALS • PLANTERS • FARM STAND
"THE MARKET AT BEACON"
PARTNERING WITH SAVENOR'S MARKET AND OTHER LOCAL VENDORS

For updates and hours: beaongardens.com • 774.361.6619

182 OSTERVILLE-WEST BARNSTABLE ROAD, OSTERVILLE

and water views that captivate every glimpse. Horgan Millwork from Hyannis crafted the kitchen cabinets and a long wall of built-ins for a wet bar area. A cozy living room features expected seating arrangements, with a comfortable sofa and occasional chairs, but the bonus of a long, cushioned window seat with plenty of space for multiple family members, makes the perfect spot to curl up and read, surf the web, or just take in the view with a beverage of choice.

"What's really wonderful about this house is that the living area is open and spacious, a great way to spend time together as a family. Yet, there were opportunities to create edges and away spaces, both inside and out, so if you wanted to find your own peace, it is very easy to do," Cappuccino observes.

Just beyond the long dining table for eight, a three-season porch

divides the pool area and the grassy bank that leads down to the river; all without obstructing any of the view. The porch provides additional seating for relaxation, plus a compact dining area for warm nights. An exterior door leads outside to additional casual seating on a covered back porch the has a front row advantage for witnessing the boating, wildlife, light transitions, and flora that is alive and active within this serene sanctuary.

LaBarge sums it up well when he says, "There are lots of beautiful lots all across the Cape, but this project uniquely took advantage of what others might have missed. Both the landscape design and the architectural design allowed our team to build something we are proud of. Proud because this family has exactly what they wanted to create." 🏡

Julie Craven Wagner is the editor of Cape Cod HOME.



THE TILERY AT TREE'S PLACE
60 CRANBERRY HIGHWAY | ORLEANS, MA
(774) 316-4571 | www.thetileryatp.com

